

Our health, our identity, our evolution... At-Bristol's ground-breaking Inside DNA, is designed to engage new visitors with the latest issues in genetics and genomic research. Featuring interactive exhibits, it offers people a fascinating insight into cutting edge science.

From tracing a family surname to playing detective in a murder case, the exhibition makes genetics accessible in a fun and engaging way. Including five exhibition zones and covering topics as diverse as crime, ancestry, drugs, and evolution; Inside DNA has been designed to appeal to a wide range of visitors, aged 14 years +.

As well as supporting the curriculum at KS3, KS4 and post-16, and the work of science students, the exhibition has proved successful in attracting new audiences and stimulating debate on ethical questions, such as the role of DNA databases.

The exhibition is accompanied by associated learning and engagement programmes, in addition to materials which will be updated throughout the five years of the project to coincide with significant developments in genomics research.

"I didn't like science at school much...but these things made me more interested, definitely."

A little DNA makes a big difference



Health



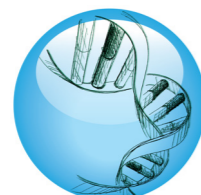
Dialogue



Evolution



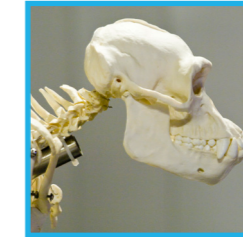
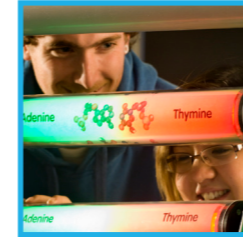
Identity



Genetics



DNA is fun!



"Interesting, surprisingly interesting actually!"

Genetics

Explores how current knowledge of the structure, function and interactions of the human genome is changing our understanding of human biology.

Identity

Explores how contemporary genetics is helping to identify similarities and differences between us, and the personal and forensic applications of this knowledge.

Health

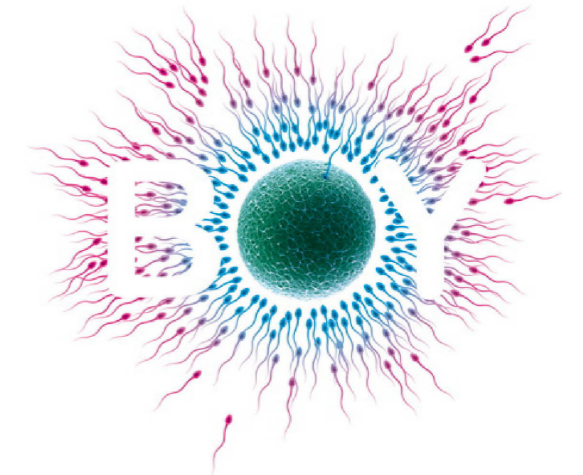
Explores the potential for applying contemporary genetics in medicine and how it is beginning to help us better identify, understand and treat diseases.

Evolution

Explores how contemporary genetics is improving our understanding of how humans evolved and the similarities and differences between ourselves and other primates.

Dialogue

Allows visitors to give their views on the ethical issues raised by the exhibition. The suite of News and Views pods allows visitors to find out the latest news on genomic research, vote on a variety of questions, and leave their thoughts behind for others to see.



Hire Details:

Hire Fee: FREE*

Area Required: 300 m²

Ideal hire period: 6 Months

Average installation/ dismantling period: 7 days

Transport/insurance: Hirer pays inward transport costs and hire period insurance

Power Requirements: Mains power

Support Material:

Exhibition manual containing guidelines for a successful hire period. Hirers will receive a Learning and Programmes support package as well as Marketing and PR templates and guidelines for promoting the exhibition and spare parts.

Availability:

Please contact At-Bristol's travelling exhibitions office: travelling@at-bristol.org.uk 0117 915 7155

Inside DNA was developed by At-Bristol on behalf of the Association of Science and Discovery Centres, with funding from the Wellcome Trust and support from the Sanger Institute.

*Funding from Wellcome Trust allows At-Bristol and ASDC to offer the exhibition free of charge to the first 8 host venues. In return host venues are required to provide accompanying programming, marketing and education.



UK Association for Science and Discovery Centres

